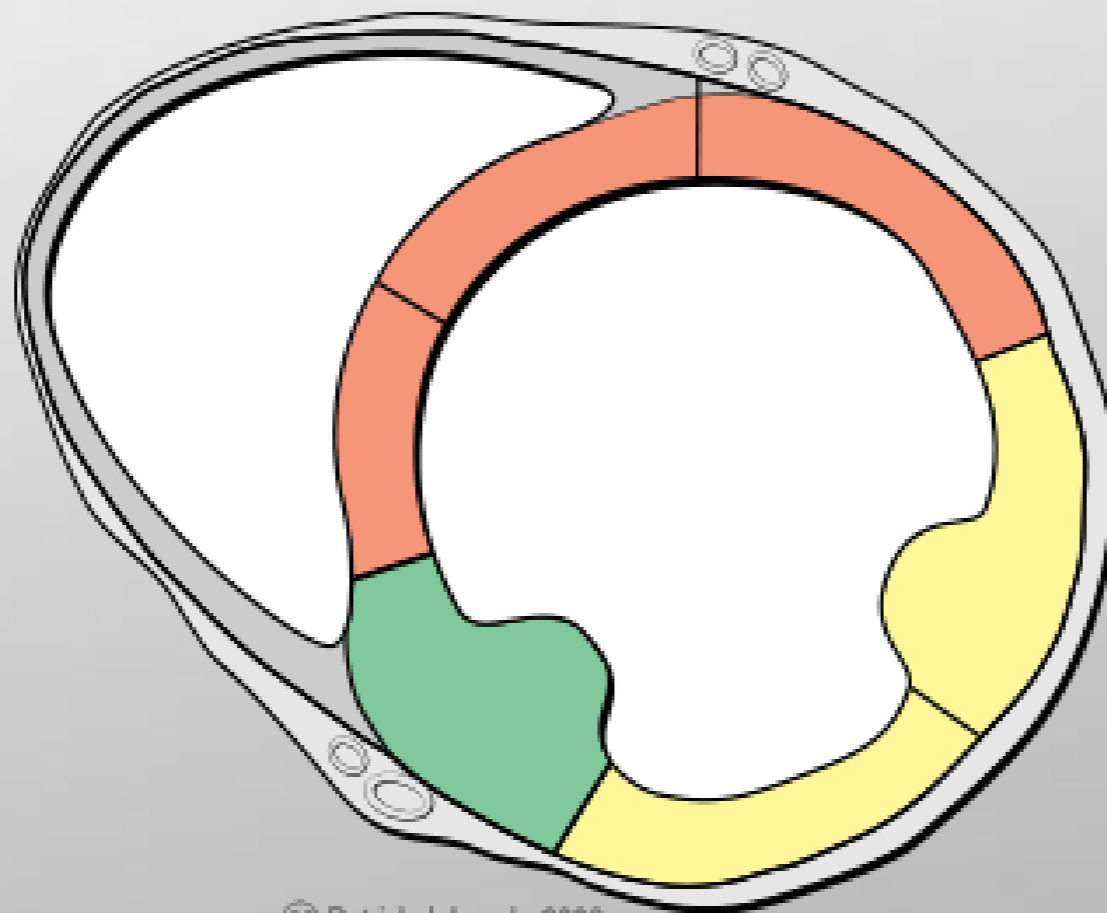


## Wall Motion



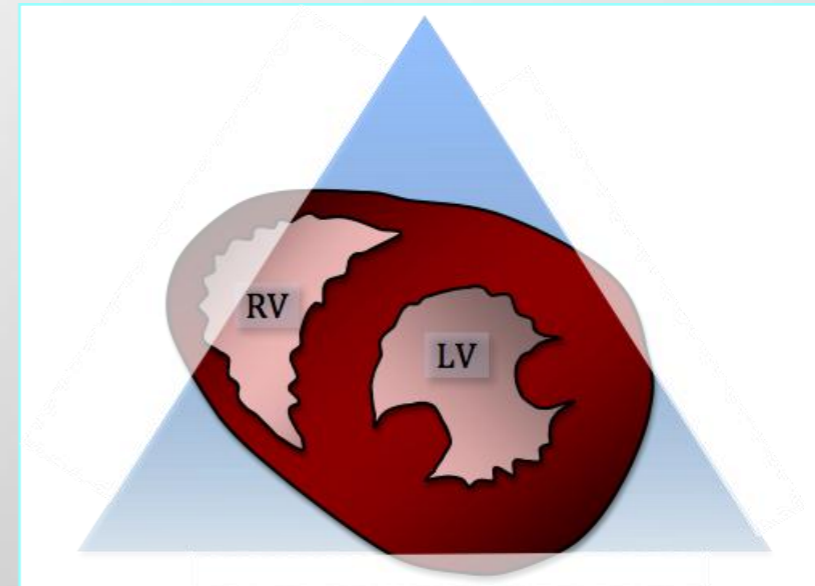
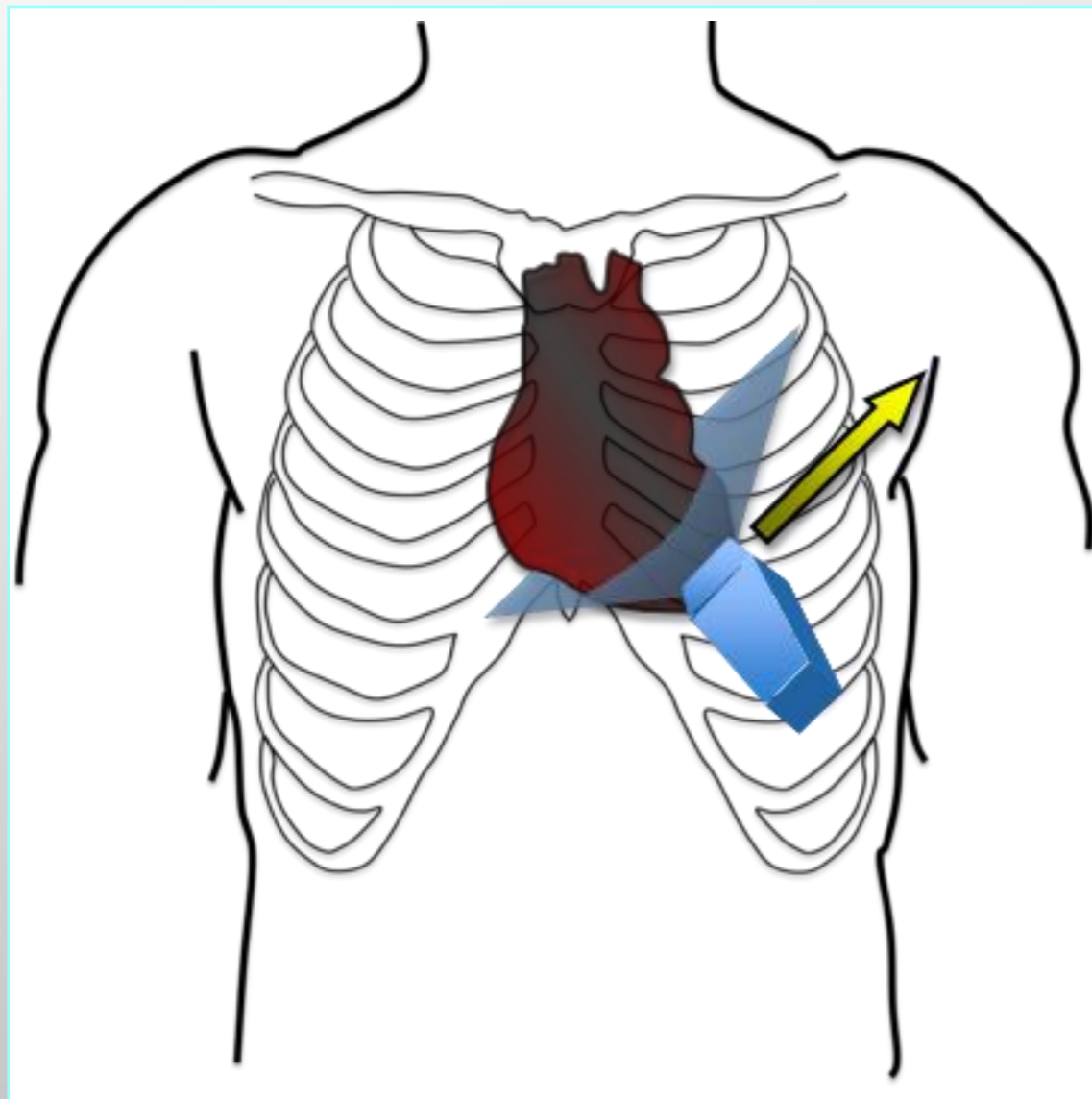
## Wall Motion - Does it Help?

- SWMA in acute CP patients
  - Detected in 90-95% of transmural
  - Detected in 80-90% of subendocardial
- Specificity of 80-90%

## Can we do it?

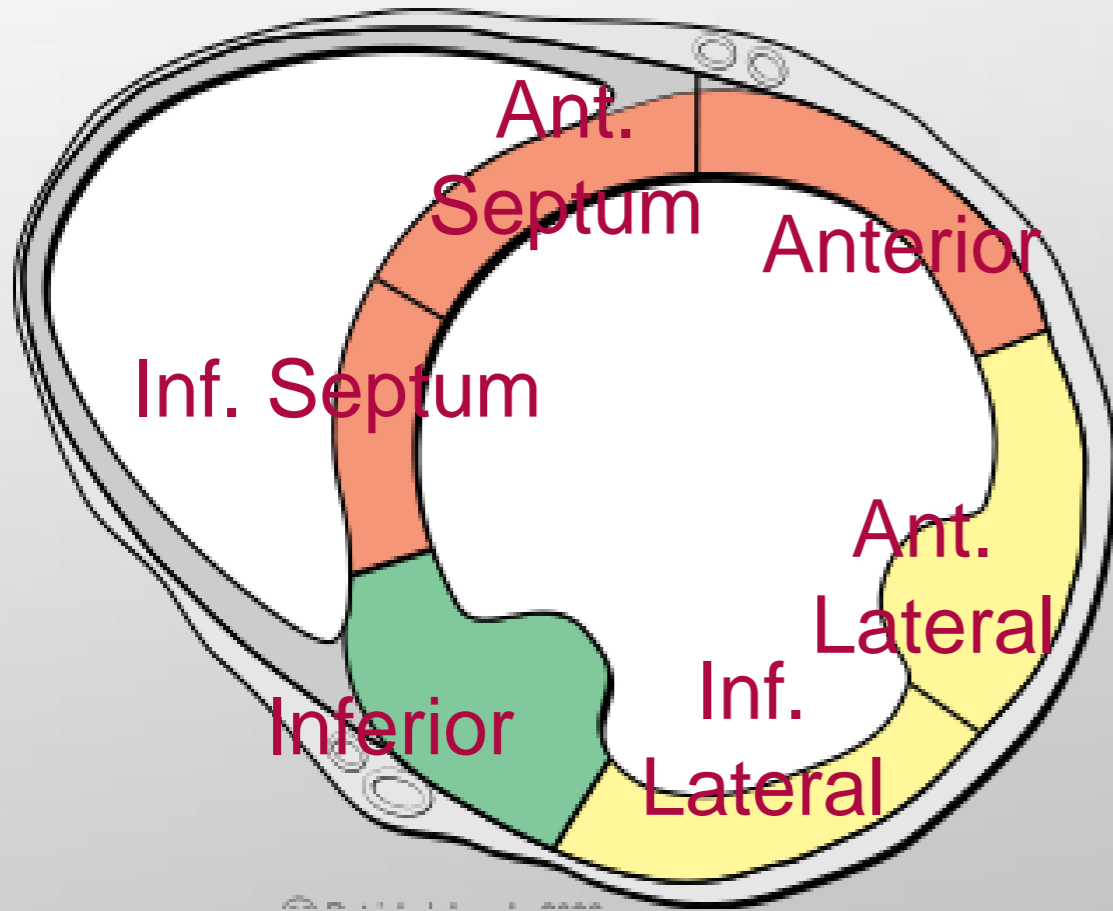
- A Brief Training Module Improves Recognition of Echocardiographic Wall Motion Abnormalities by Emergency Medicine Physicians. Kerwin, C. Emergency Medicine International. 2011
- 35 EM docs received a 30 min training module.
- Pretest 67%
- Posttest 87%

# Parasternal Short Axis



QuickTime™ and a  
Microsoft Video 1 decompressor  
are needed to see this picture.

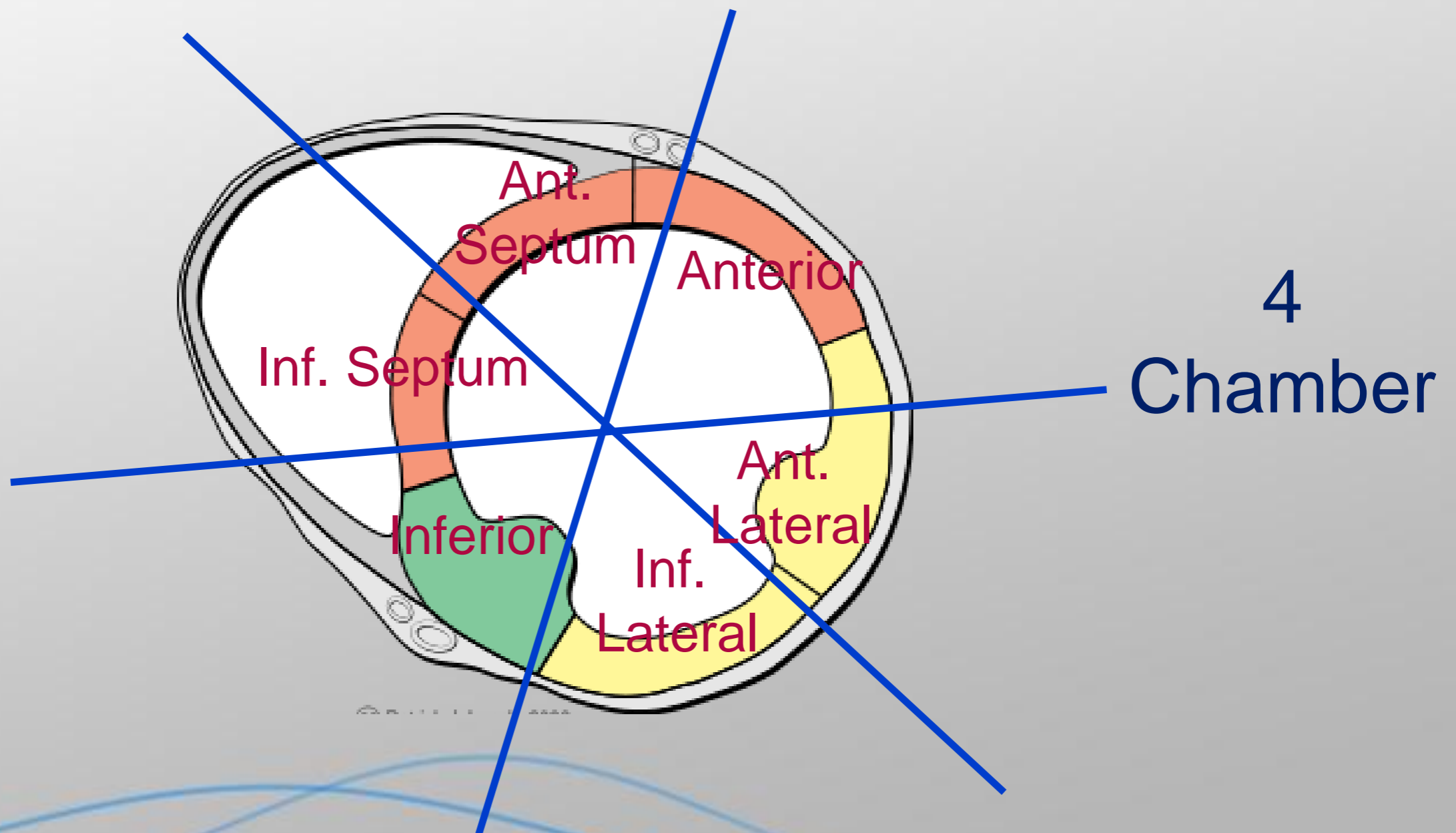
## Wall Motion



QuickTime™ and a decompressor are needed to see this picture.

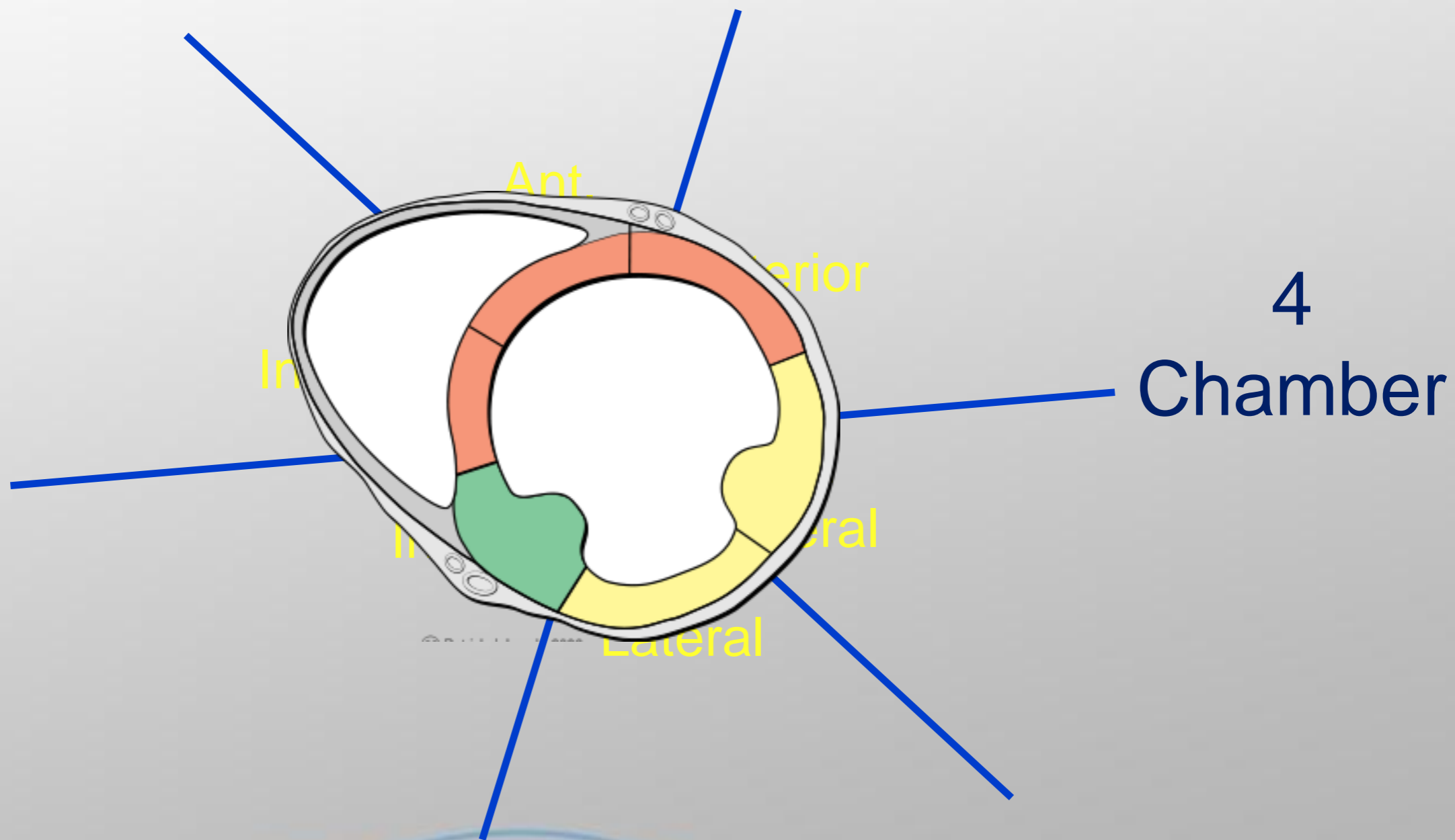
Long Axis

2 Chamber



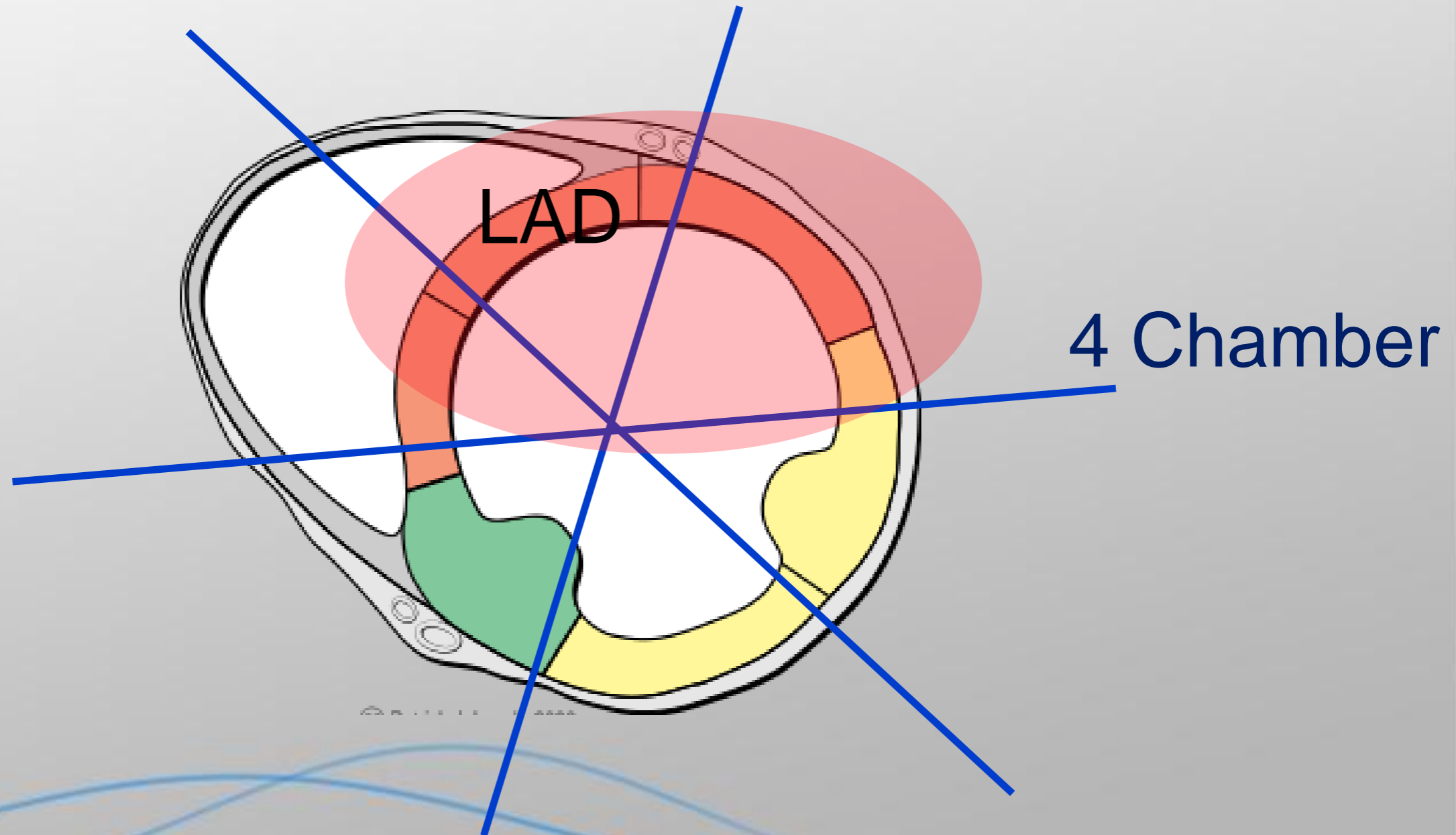
Long Axis

2 Chamber



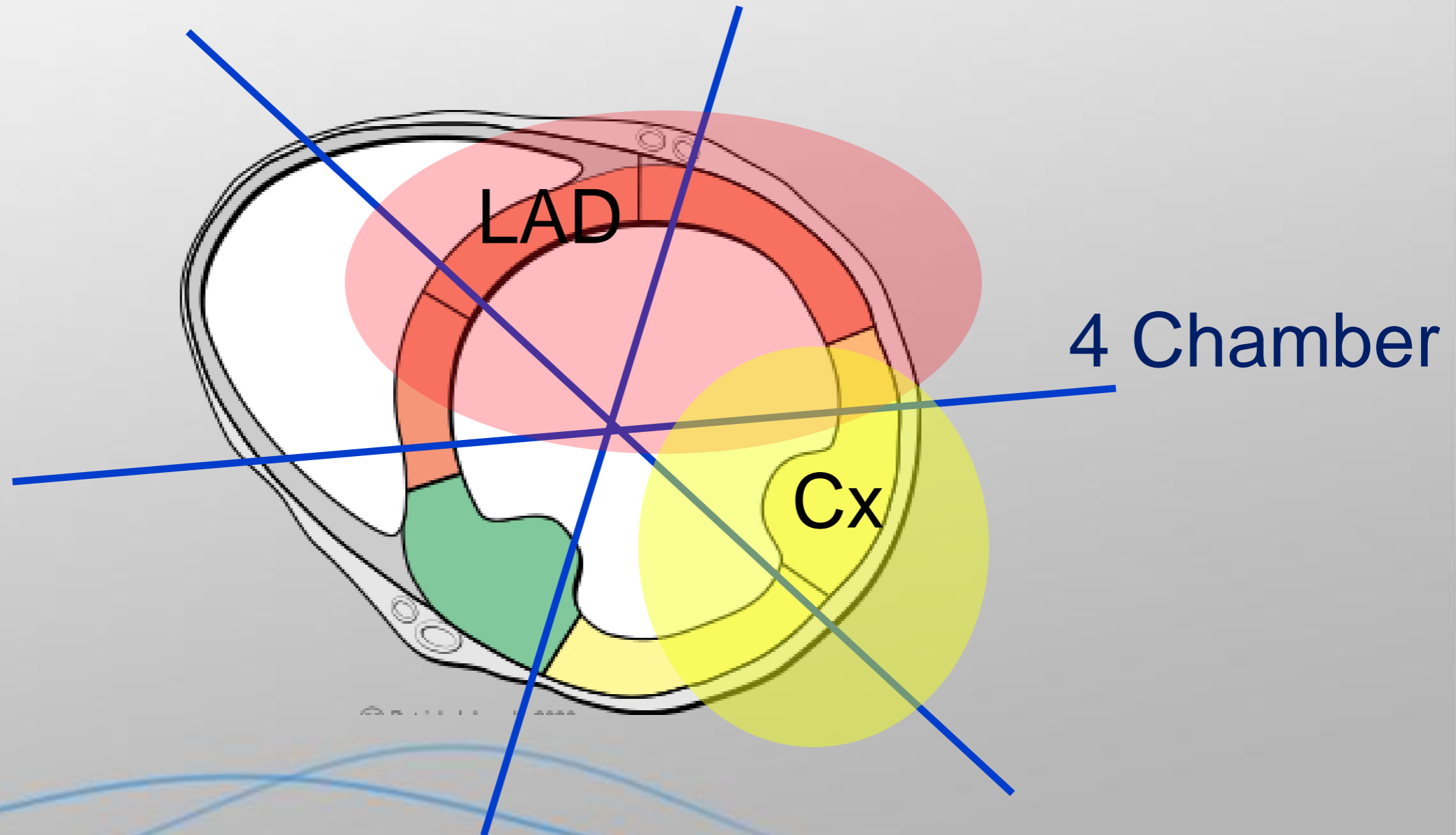
Long Axis

2 Chamber



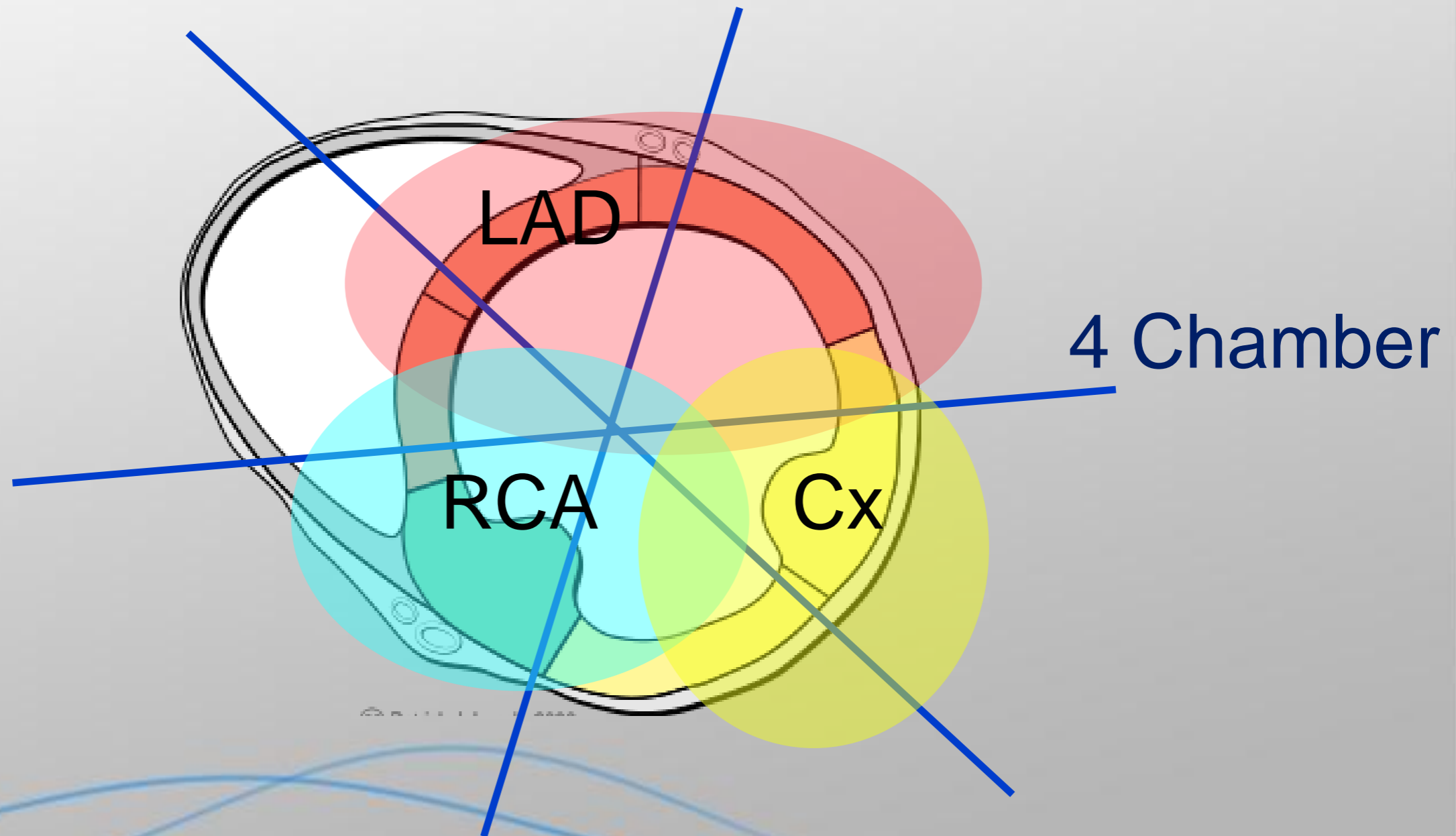
Long Axis

2 Chamber



Long Axis

2 Chamber



4 Chamber

LAD

RCA

Cx

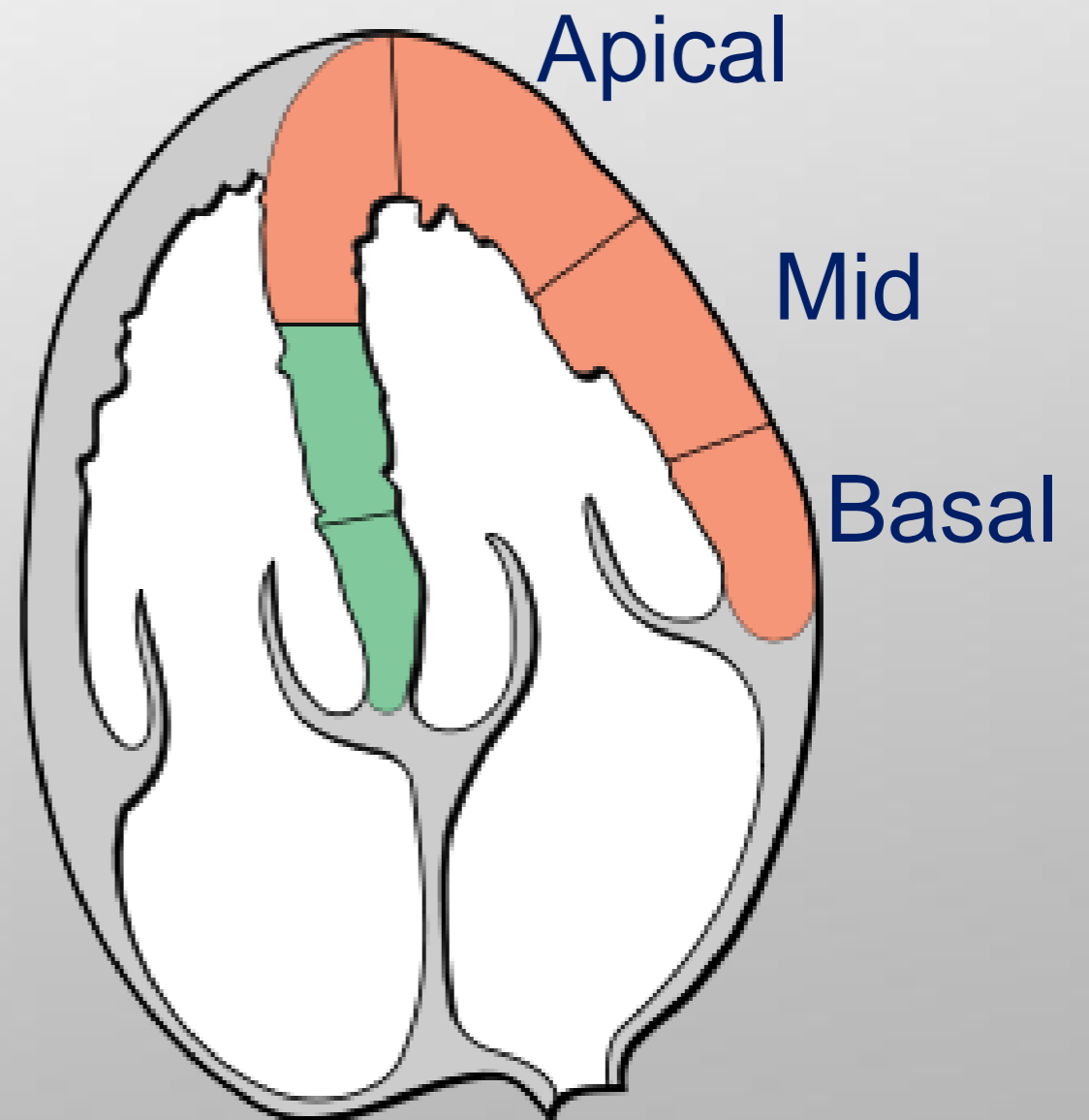
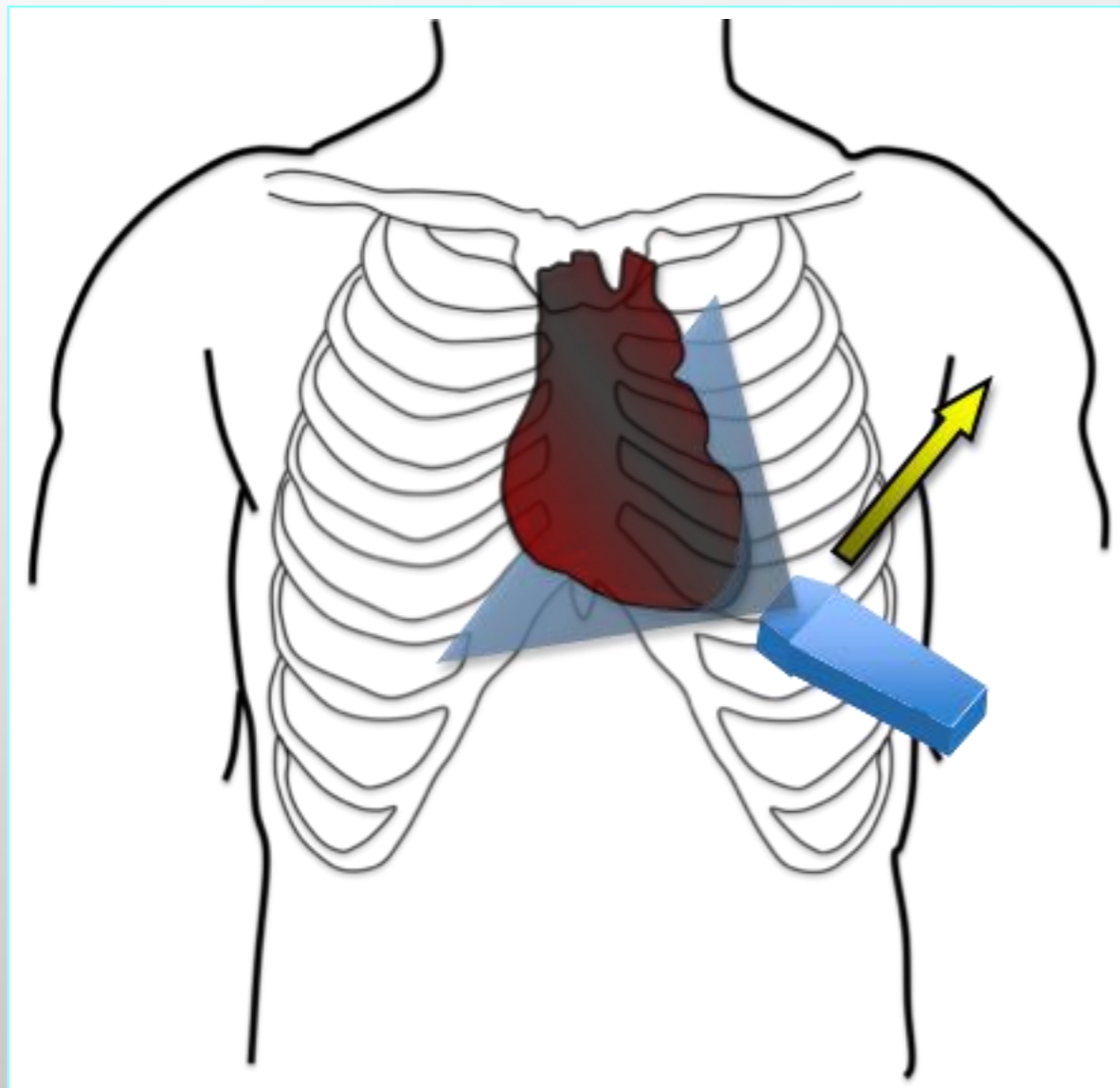


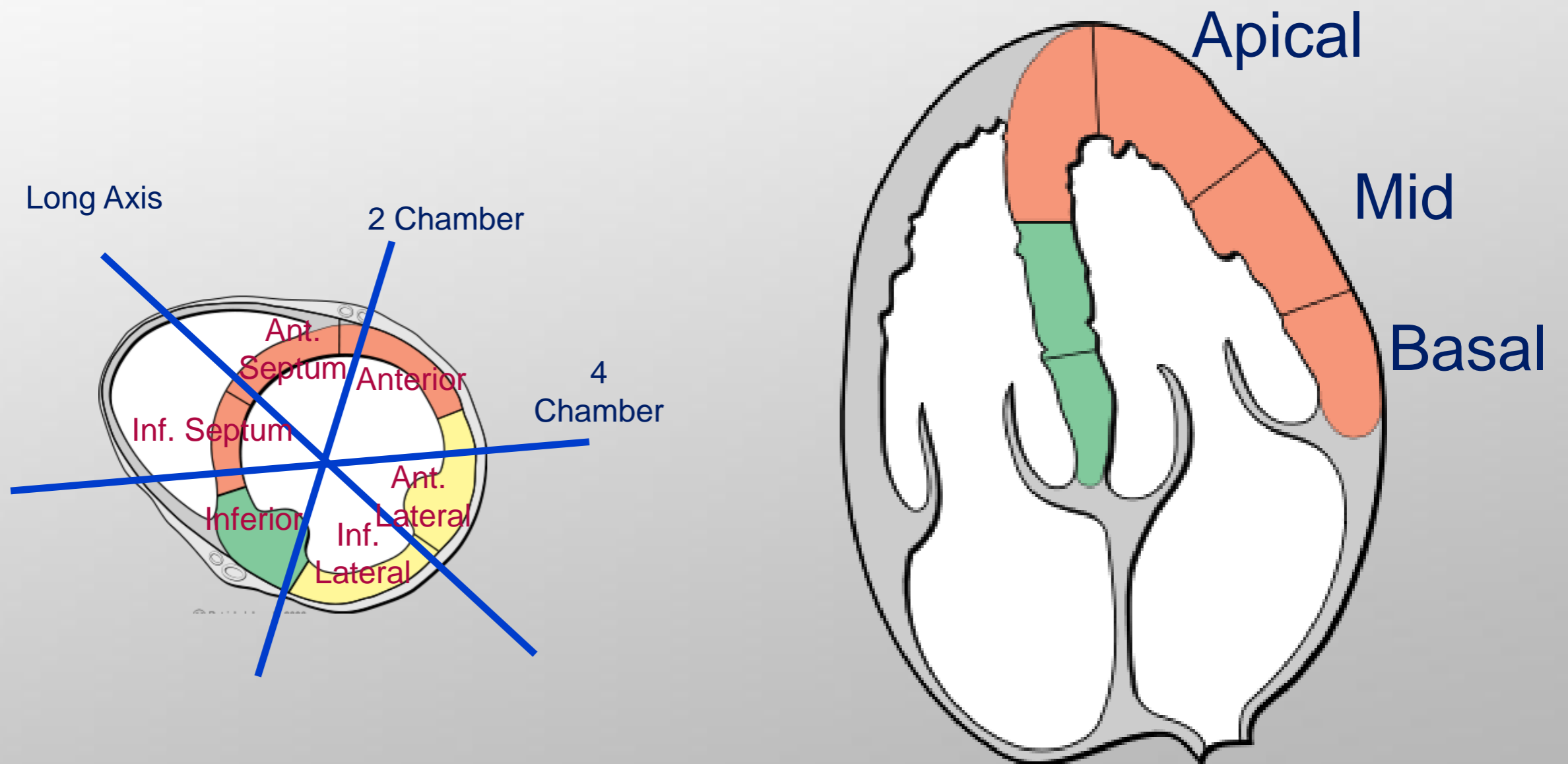
LAD

RCA

Cx

QuickTime™ and a  
decompressor  
are needed to see this picture.

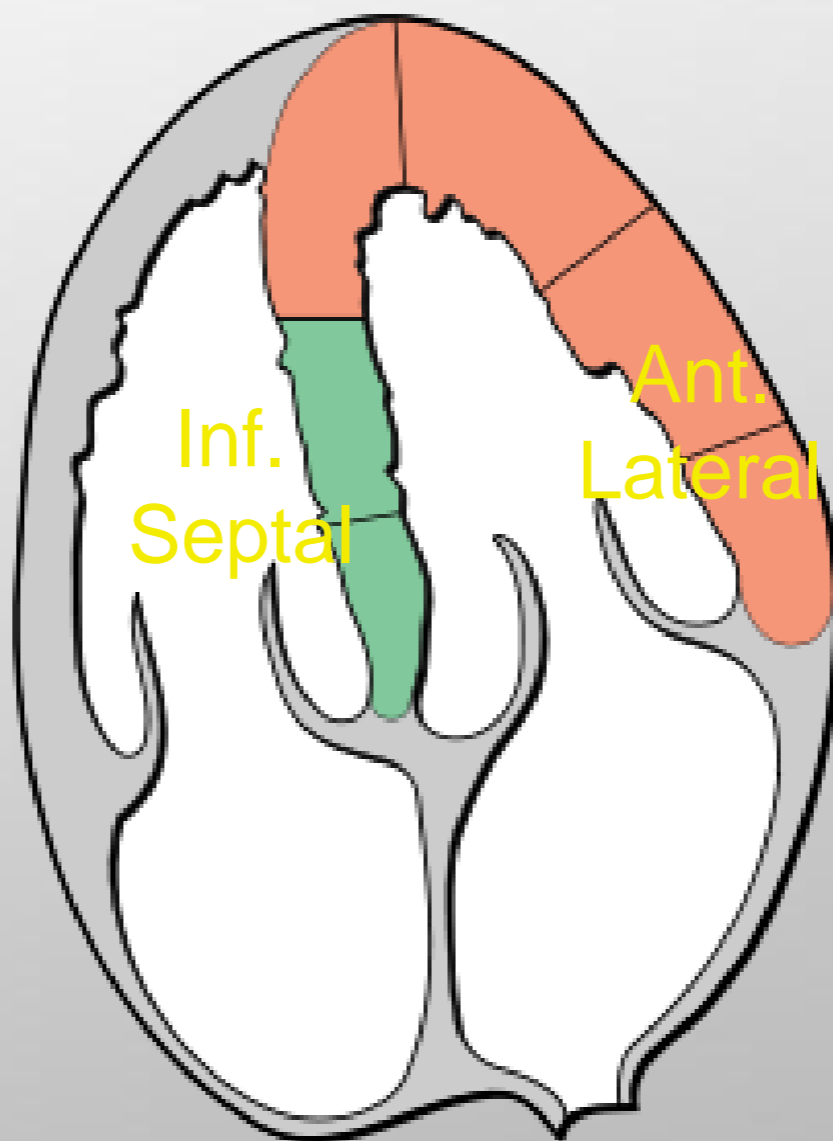


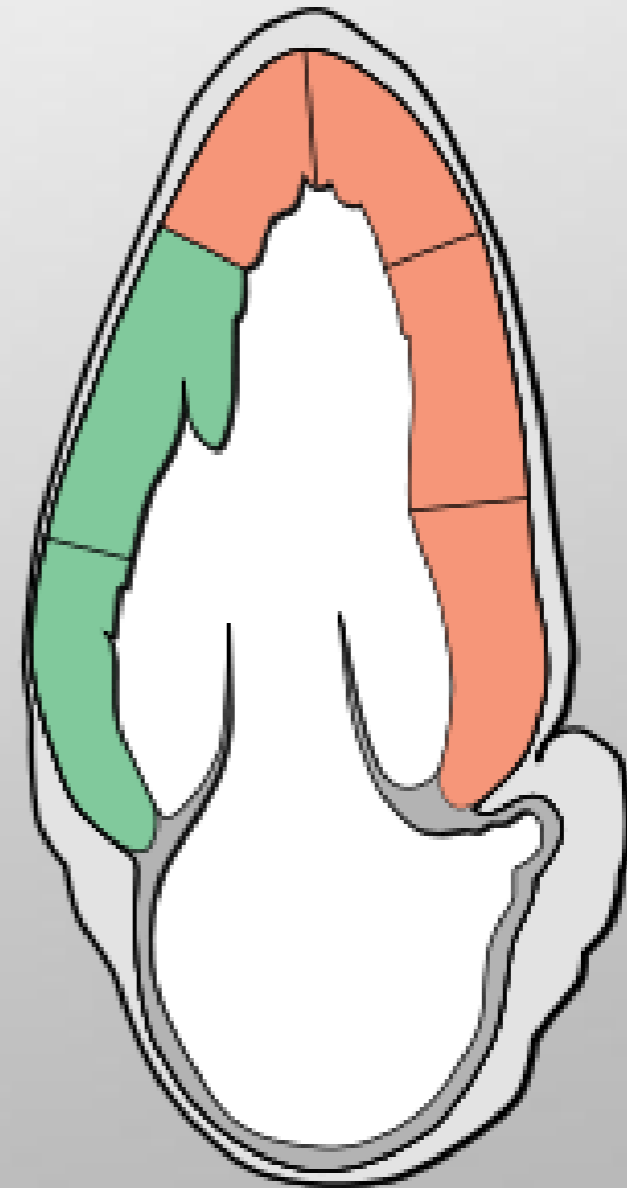
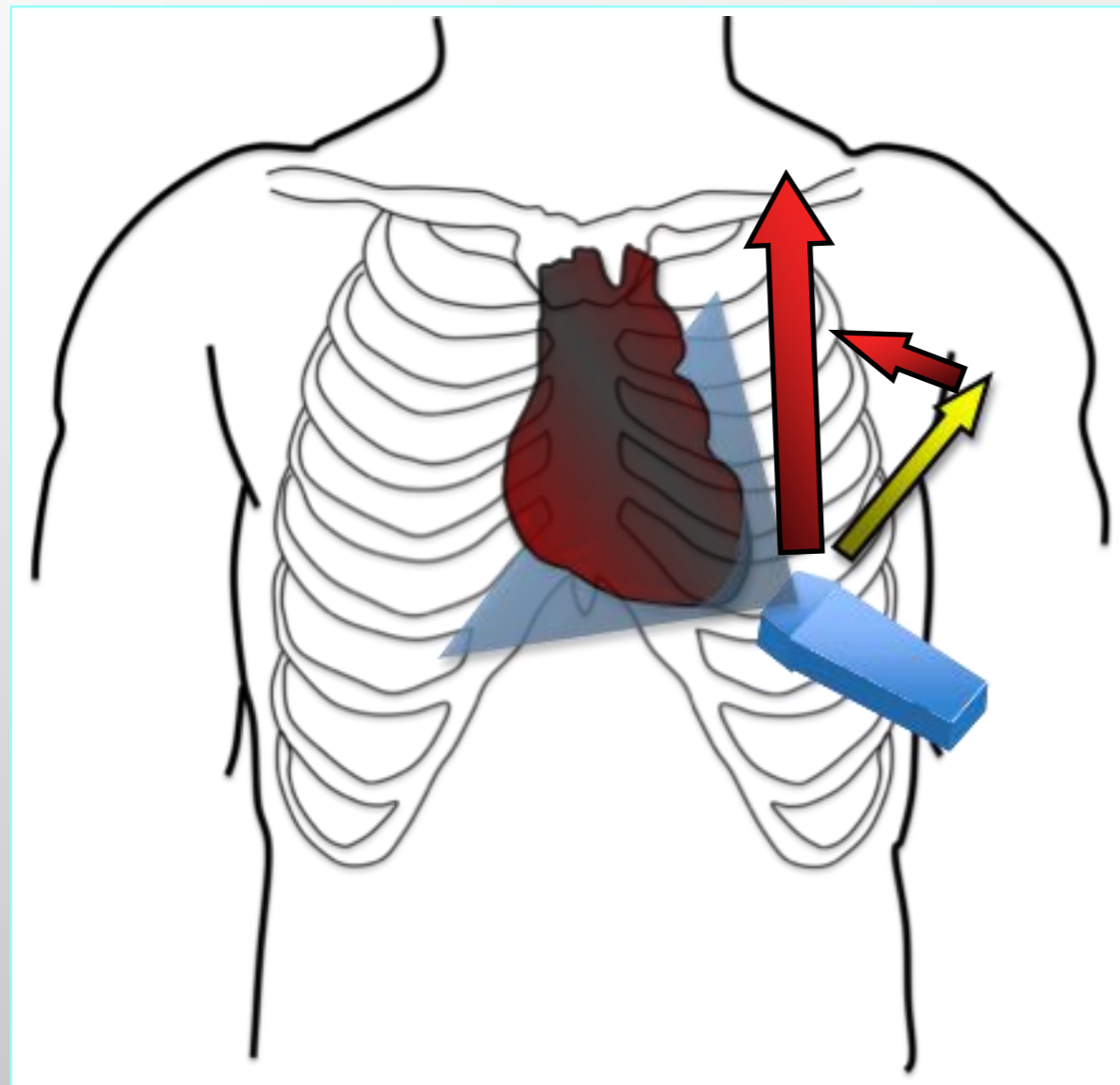


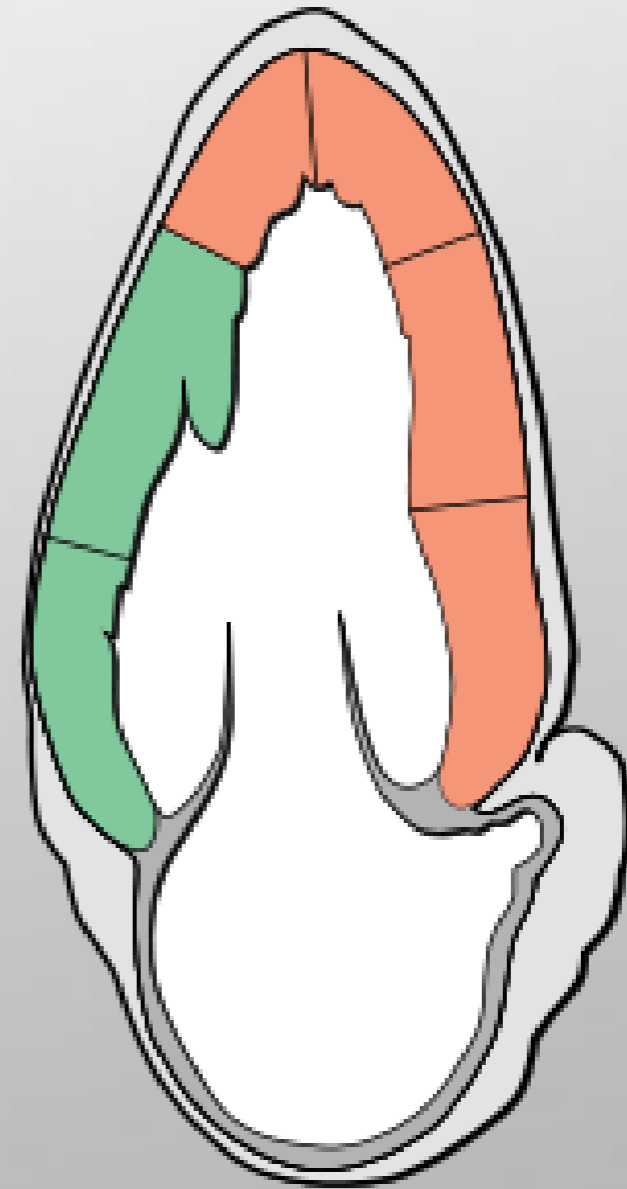
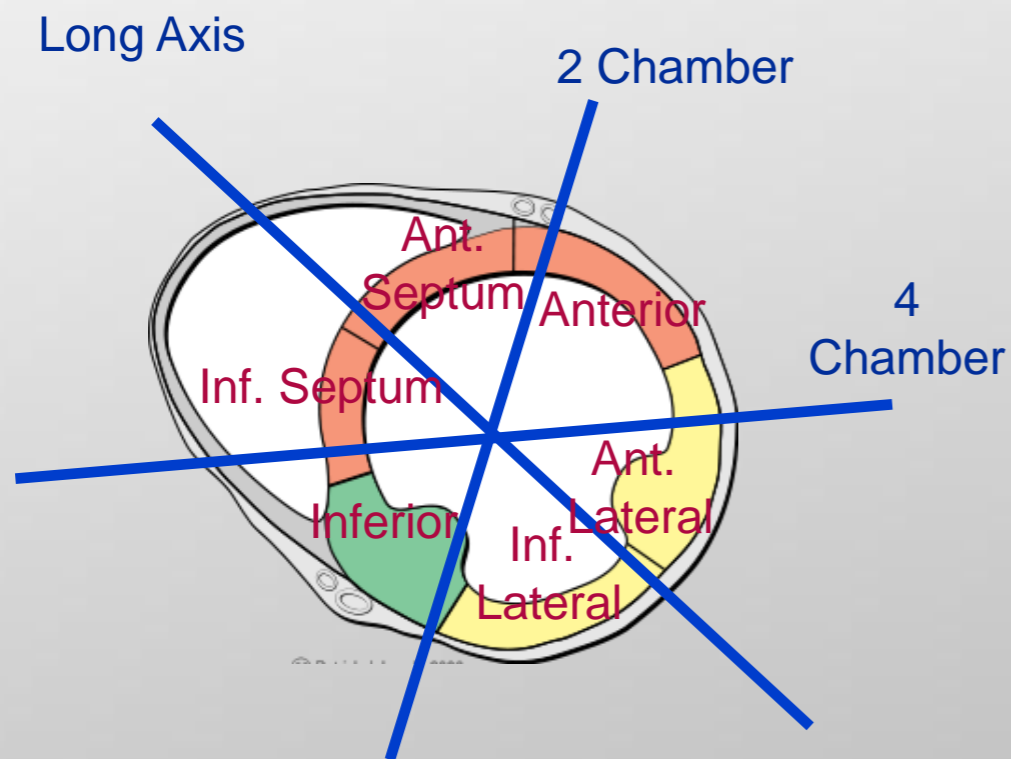
**EUP**  
**EUP**

Emergency Ultrasound Podcast





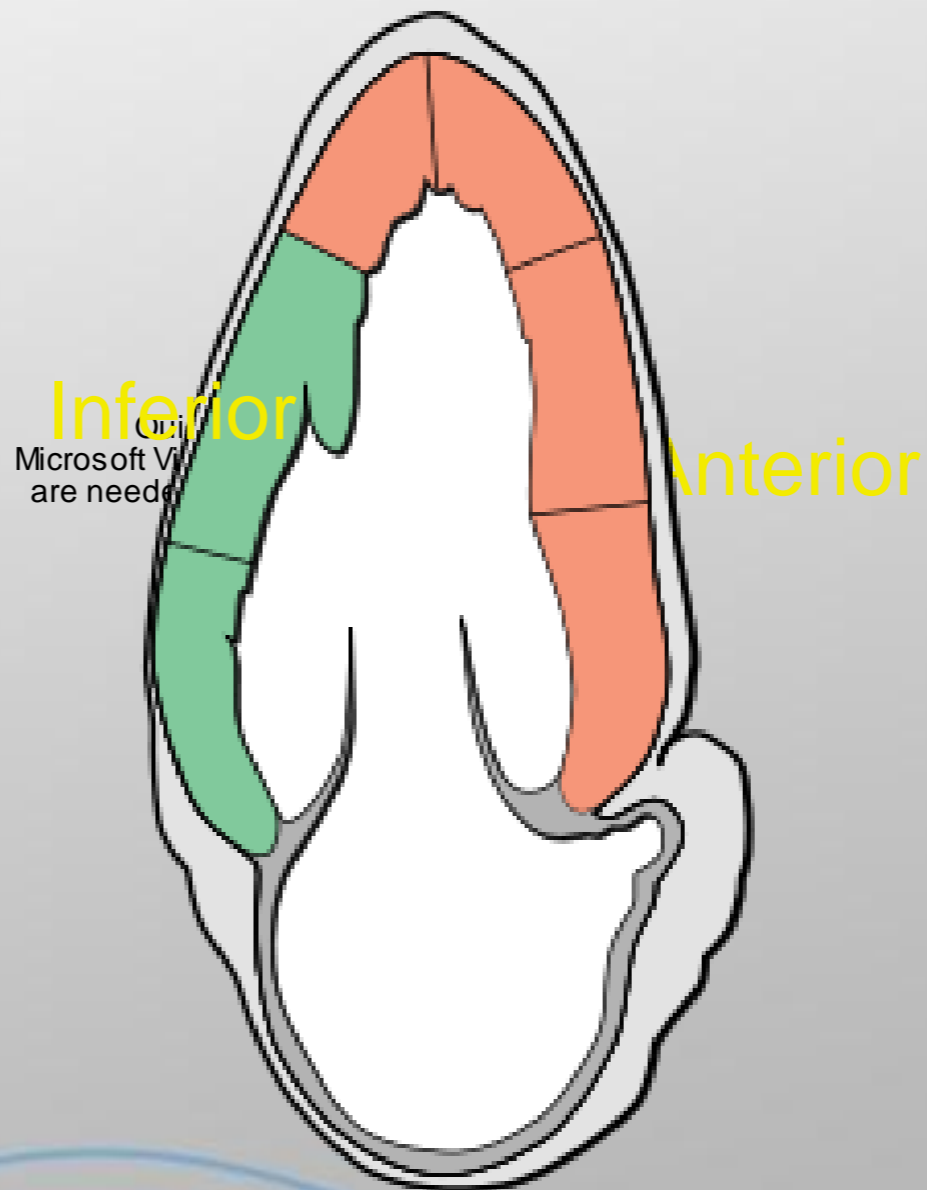


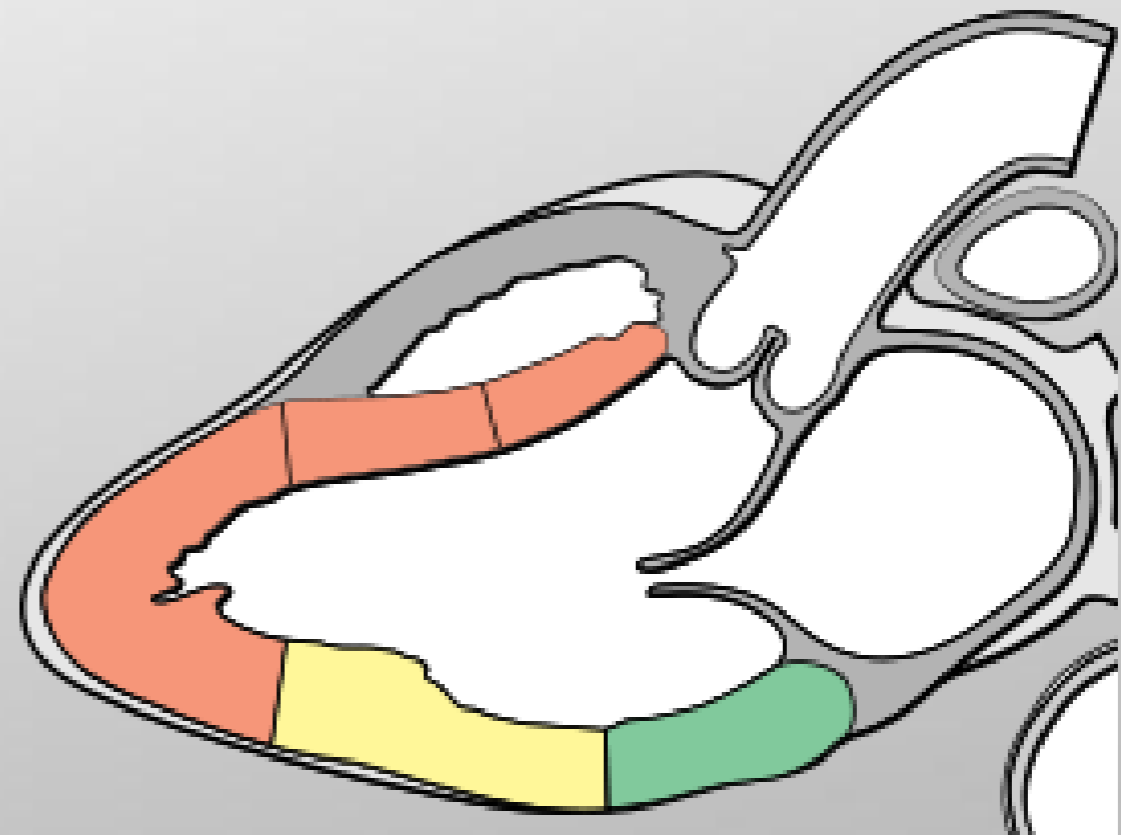
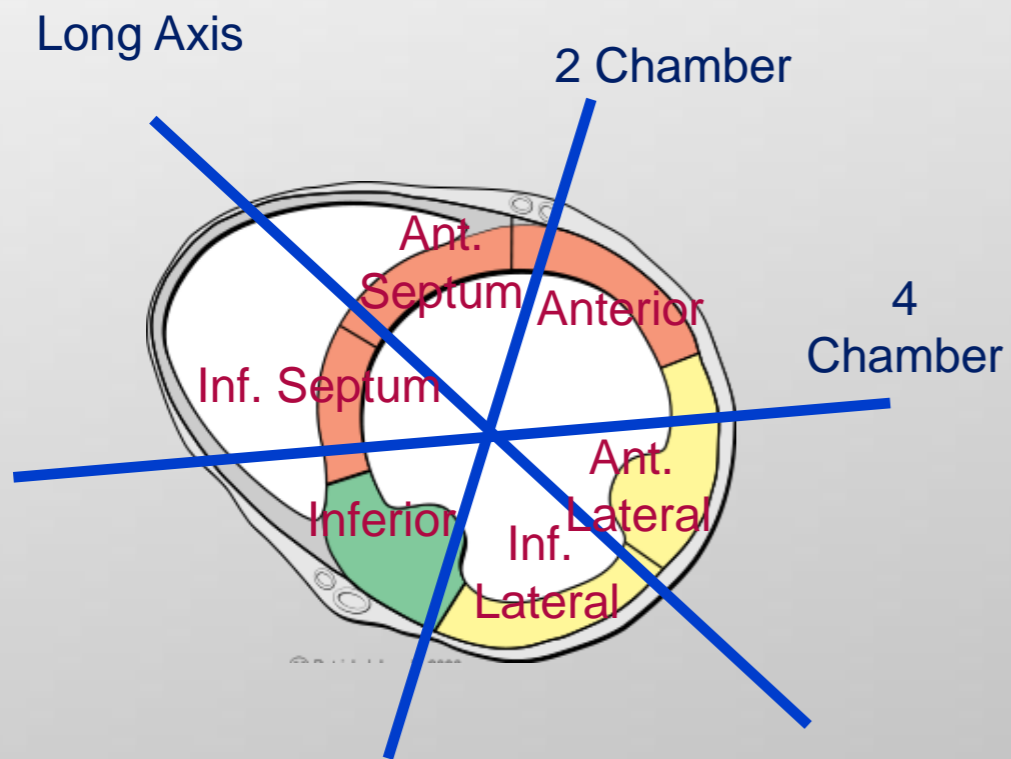


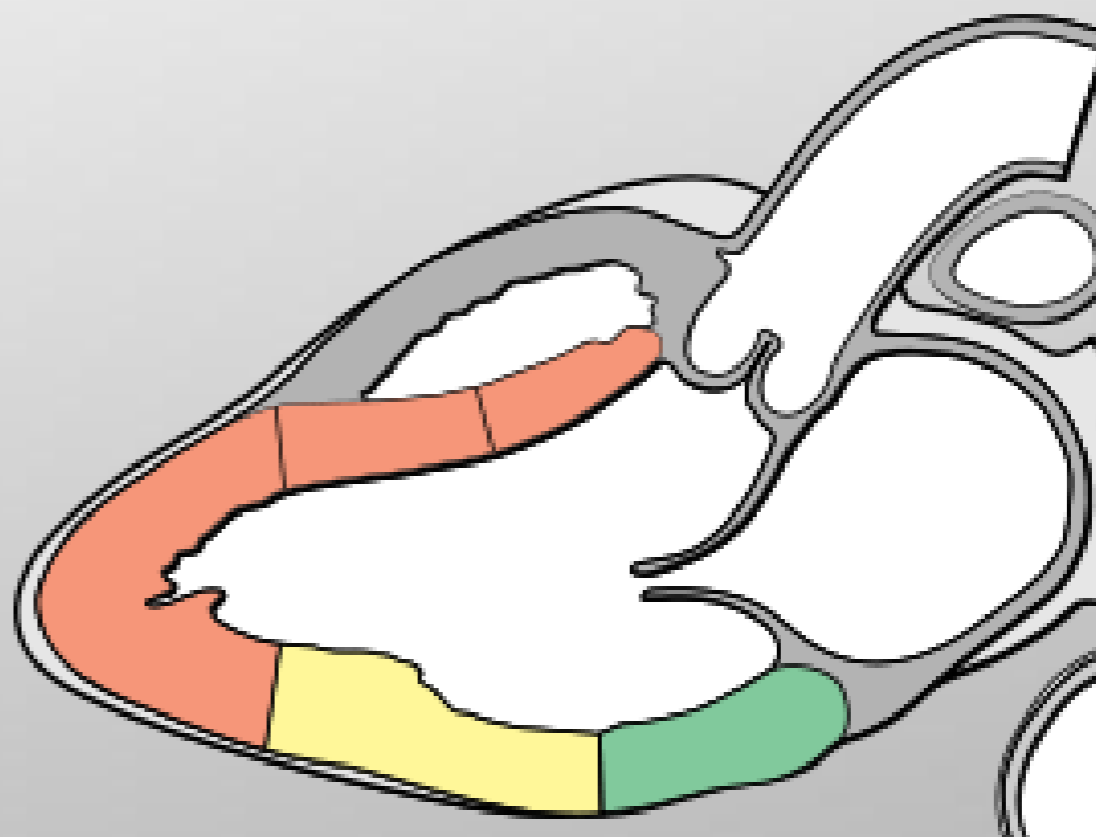
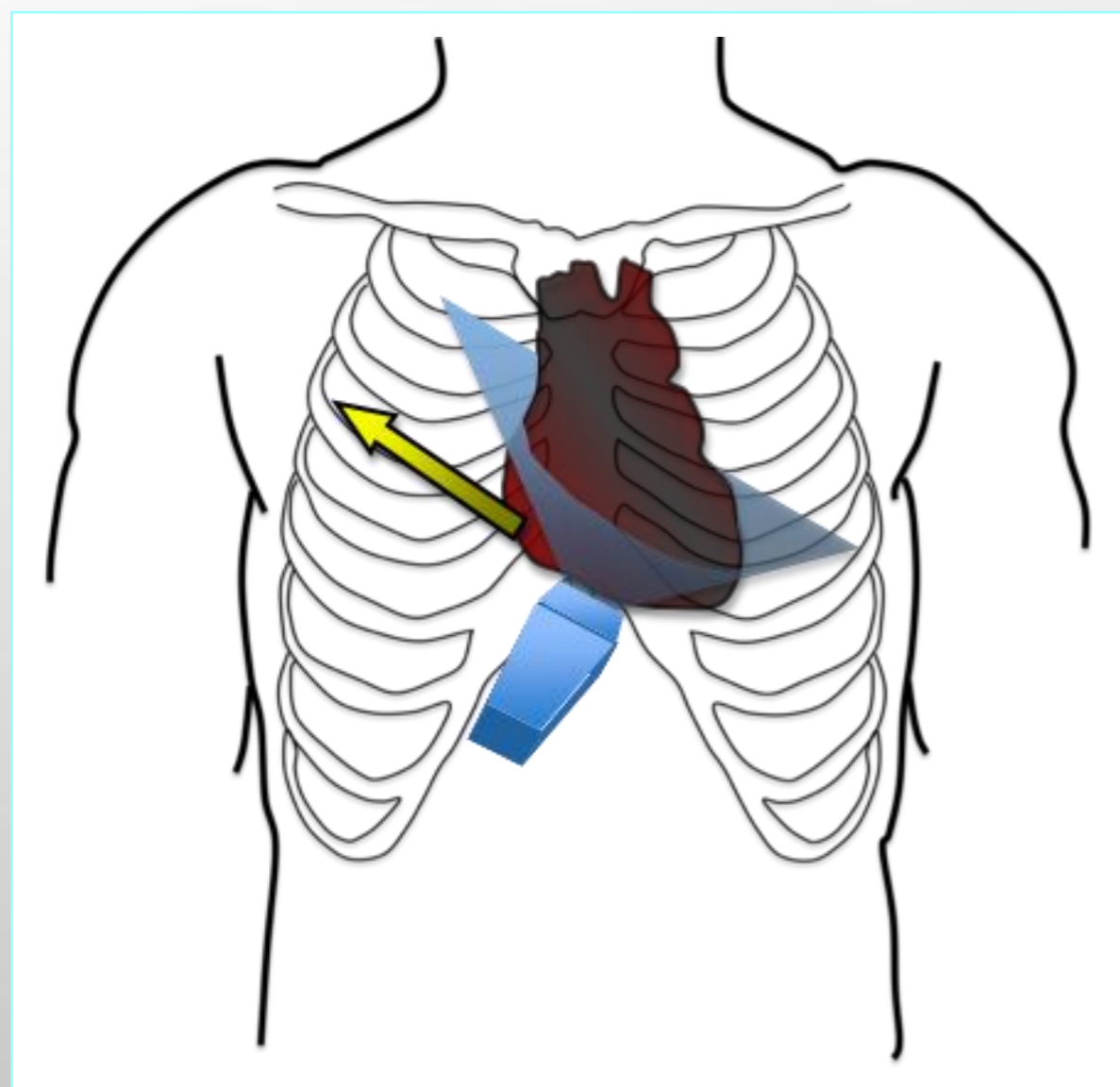
# EUP

Emergency Ultrasound Podcast





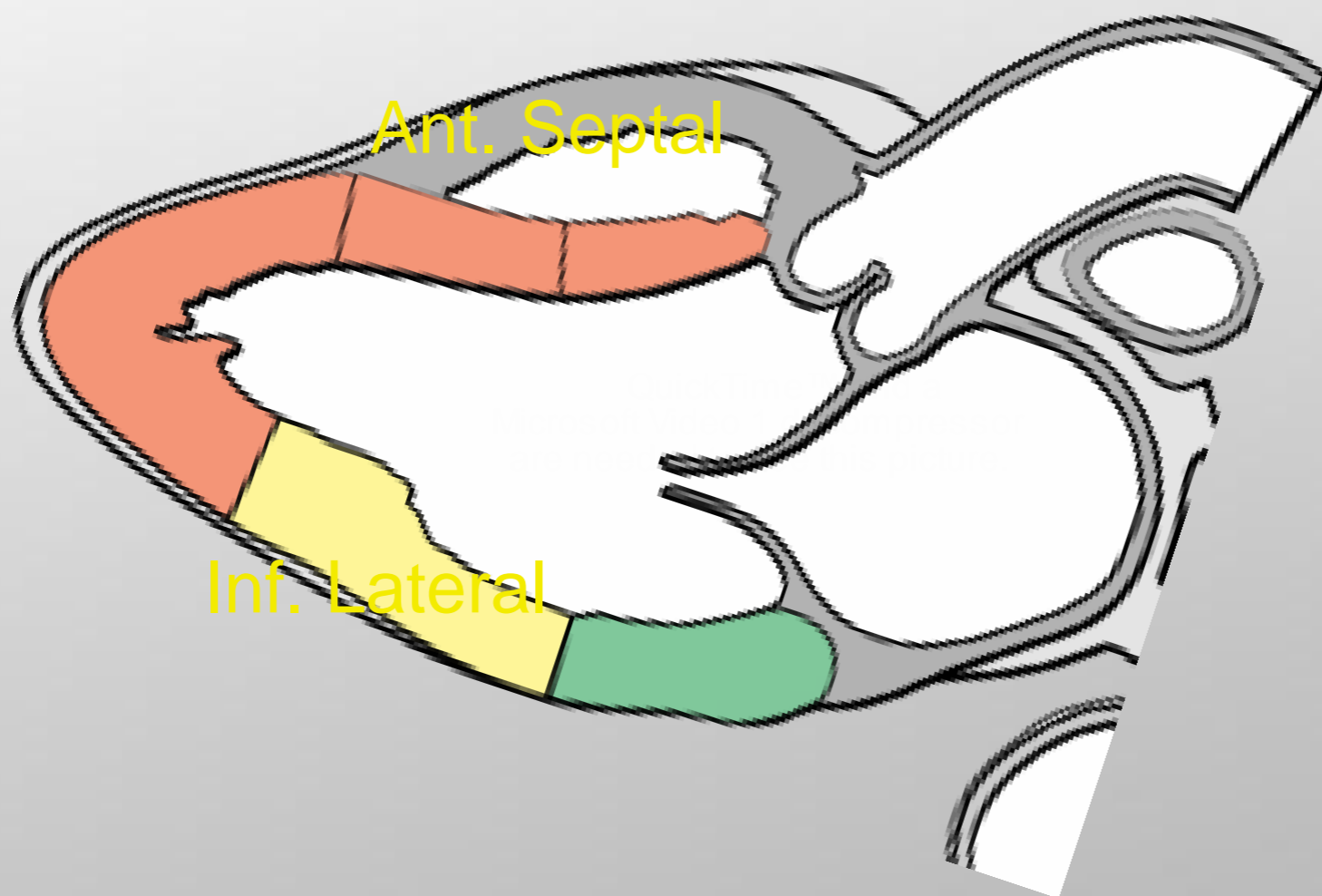




**EUP**  
EUP

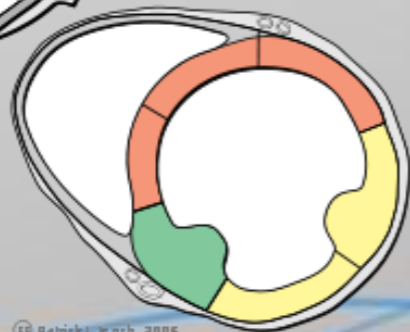
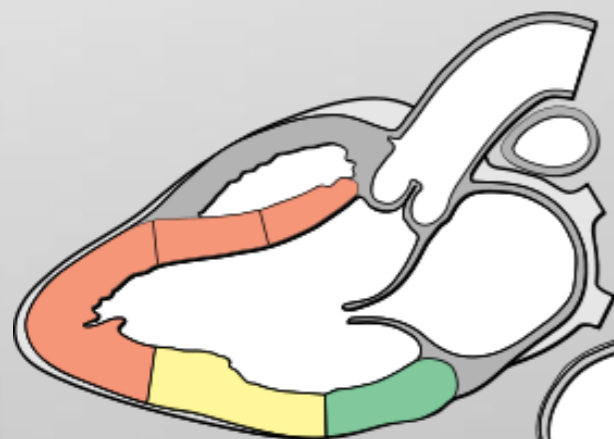
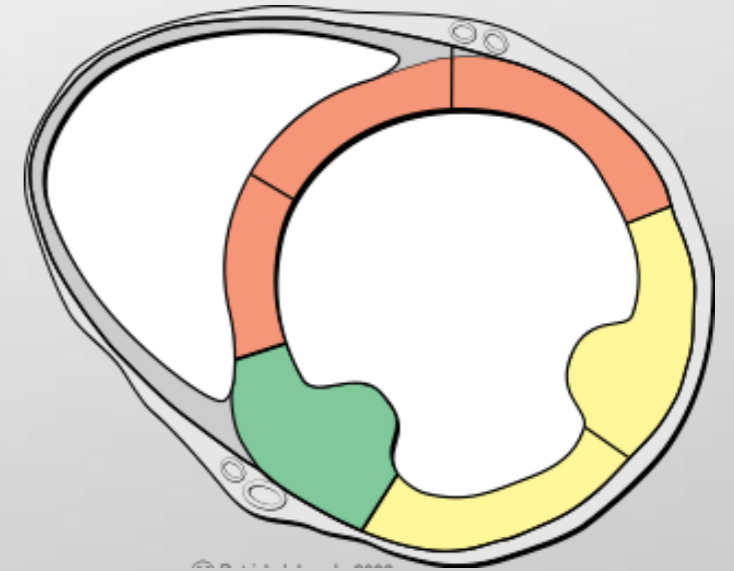
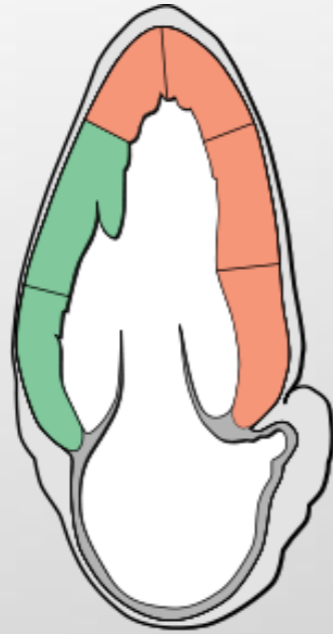
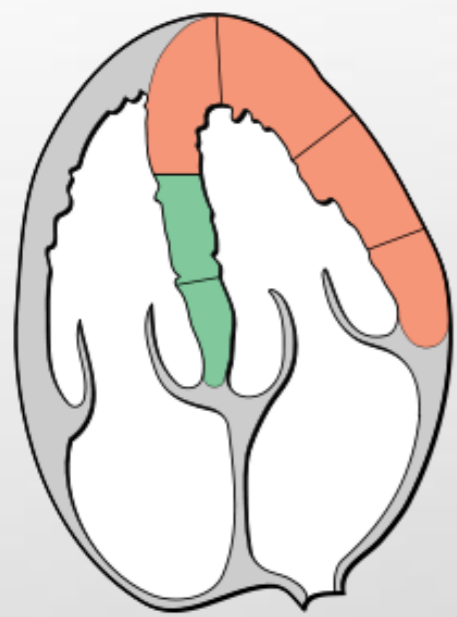
Emergency Ultrasound Podcast



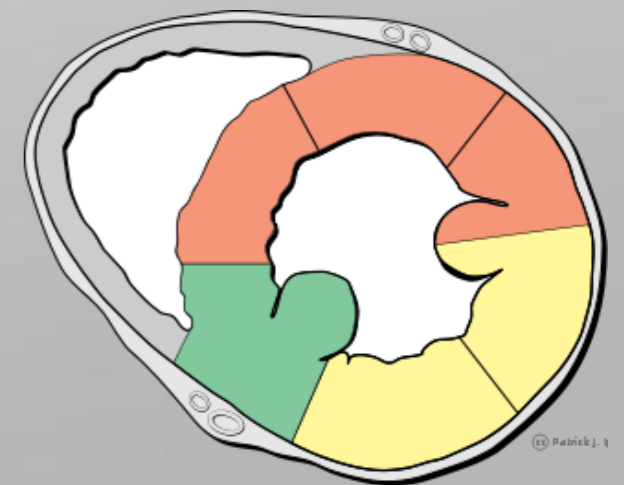


## Kinesis

- Normal:  $>30\%$  thickening
- Hypokinetic: 10-30% thickening
- Severe Hypokinesis:  $<10\%$  thickening
- Akinetic: No thickening
- Dyskinetic: Outward motion



## WM Cases



# Case 1

QuickTime™ and a  
decompressor  
are needed to see this picture.

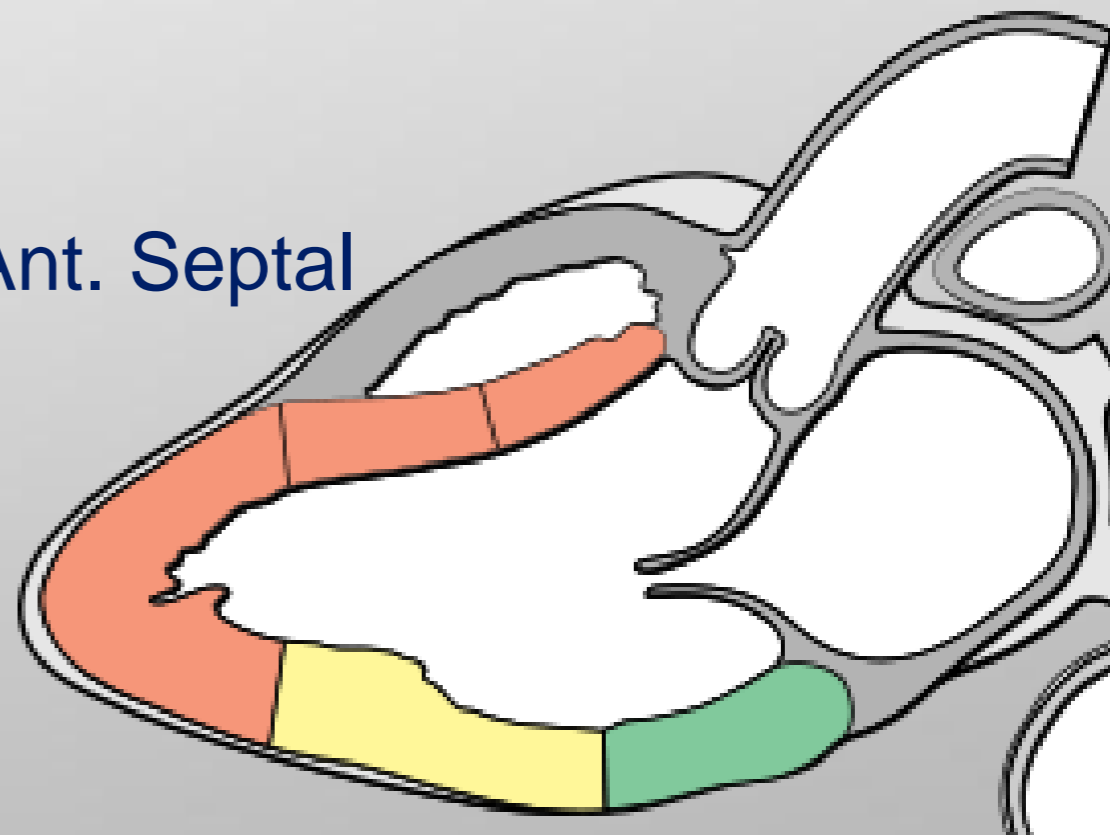
# Case 1

LAD

QuickTime™ and a decompressor are needed to see this picture.

Cx

Ant. Septal



Inf. Lateral

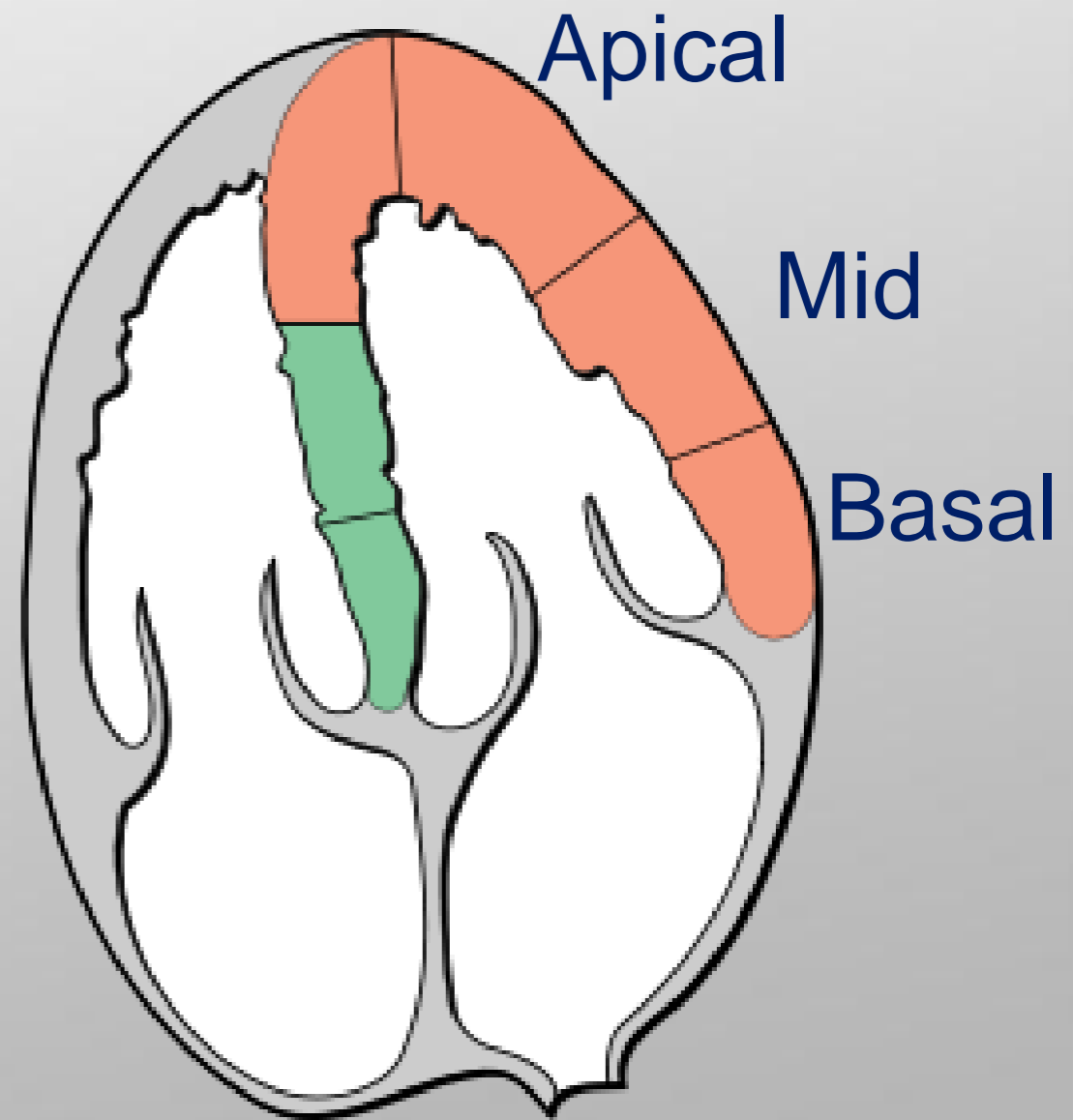
# Case 2

QuickTime™ and a  
Microsoft Video 1 decompressor  
are needed to see this picture.

### Case 2



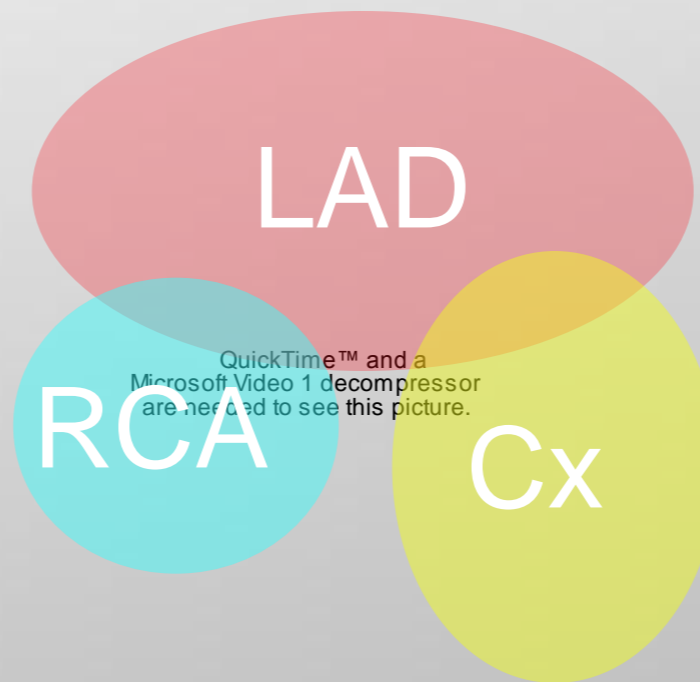
QuickTime™ and a  
Microsoft Video 1 decompressor  
are needed to see this picture.



# Case 3

QuickTime™ and a  
Microsoft Video 1 decompressor  
are needed to see this picture.

# Case 3



QuickTime™ and a  
Microsoft Video 1 decompressor  
are needed to see this picture.

**EUP**

Emergency Ultrasound Podcast

# WM Cases